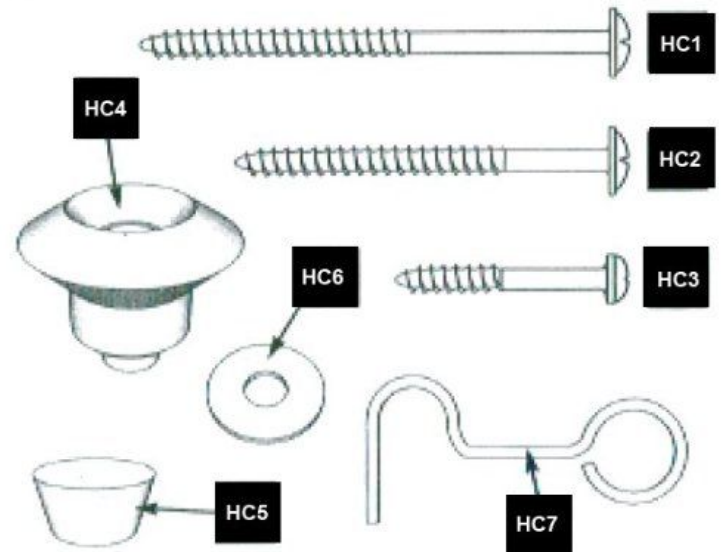


PACKAGE CONTENTS



PC1 - Shutter Panels - 2 or 4 total
PC2 - Hanging Strips - 2 total
PC3 - Filler Strips - 16 total

HARDWARE CONTENTS



- | | |
|-----|------------------------|
| HC1 | 4 or 6 - 2 1/2" Screws |
| HC2 | 4 or 6 - 2" Screws |
| HC3 | 2 - 1 1/8" Screws |
| HC4 | 2 - Knobs |
| HC5 | 4 or 6 - Screw Plugs |
| HC6 | 2 - Flat Washers |
| HC7 | 1 - Hook |

PREPARATION

Approximate Installation Time: 45 Minutes

Tools Required for Installation: Pencil, Safety Goggles, Screwdriver, Drill, Tape Measure and Circular Saw.

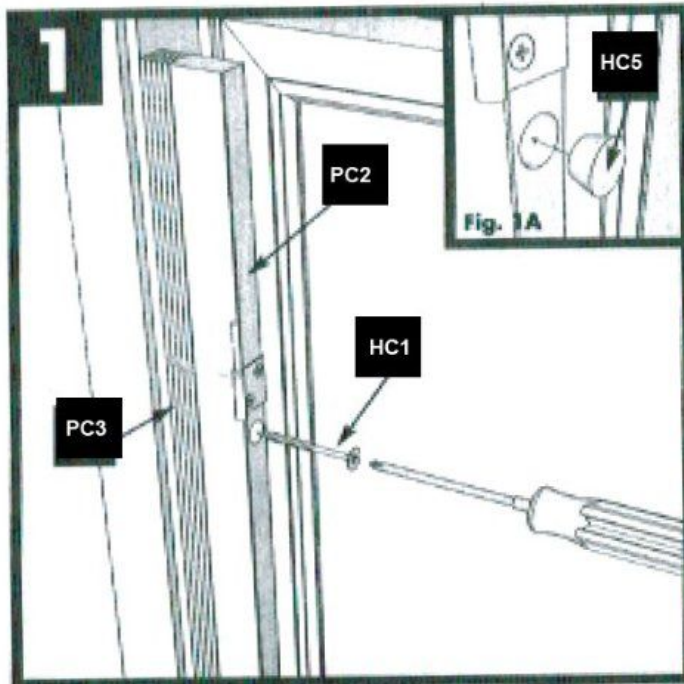
Before beginning installation of product, make sure all parts are present. Compare parts with package contents list above.

Questions or Problems? Call 1-877-913-3100 10am - 5pm EST Monday - Friday.

INSIDE MOUNT INSTALLATION INSTRUCTIONS

Measure the "inside" width and height of your desired shutter installation. Compare your installation size to the size of the shutter set you purchased. The overall width of your shutter panels (PC1), 2 hanging strips (PC2) and 16 filler strips (PC3).

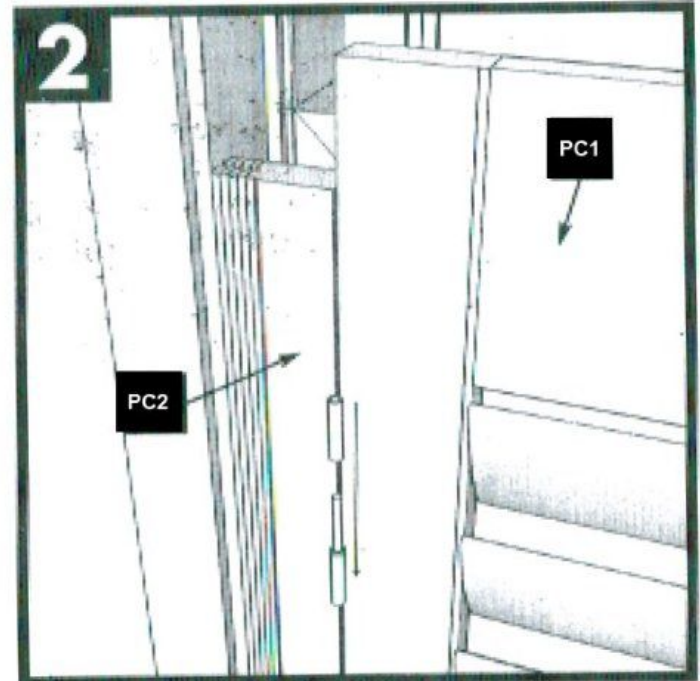
For inside mounting our filler strips (PC3) are an incredibly easy way to adjust the width of the shutter set, without having to use a saw. Each filler strip (PC3) is 1/8 in. thick. To reduce the overall width of the frame set by 1/8 in., simply peel off 1 filler strip (PC3). With the 16 filler strips (PC3) provided, you can adjust the overall width up to 2 in. If you peel off too many strips (PC3), simply snap back into place.



Step 1: (Fig. 1)

Install hanging strips (PC2) into the windowjamb using the 2 1/2" screws (HC1). Filler strips (PC3), if needed, fit between the hangingstrip (PC2) and window jamb.

Push screw plugs (HC5) into screw hole until flush with surface of hanging strip (PC2). (Fig. 1A)



Step 2: (Fig. 2)

Hang the shutter panels (PC1) onto the hanging strips (PC2).

HARDWARE USED

HC1

2 1/2" Screw - 4 or 6

HC5

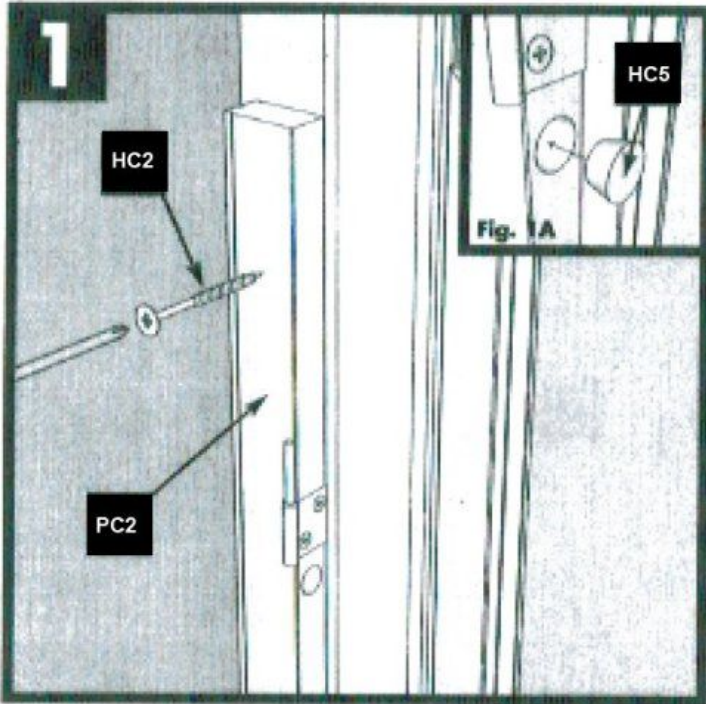
Screw Plug - 4 or 6



OUTSIDE MOUNT INSTALLATION INSTRUCTIONS

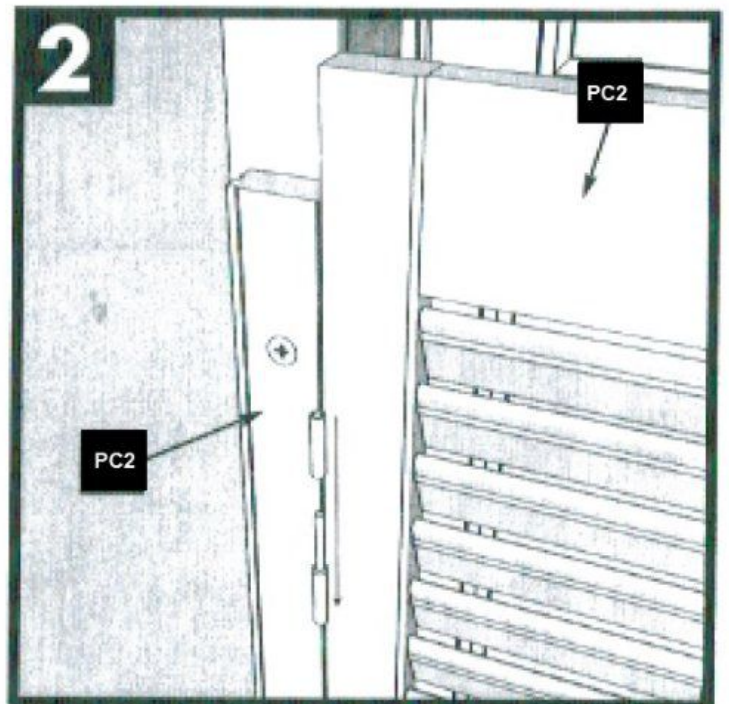
Measure the exact width and height of the area to be covered.

Important: The total width of the selected shutter should be a minimum of 2 1/2 in. wider than the inside of your window.



Step 1: (Fig. 3)

Drill a hole through the face of the hanging strips (PC2)
Use the 2 in. screws (HC2) provided by screwing through the hanging strip (PC2) and into your molding or wall depending upon the place of installation.



Step 2: (Fig. 4)

Hang the shutter panels (PC1) onto the hanging strips (PC2).

HARDWARE USED

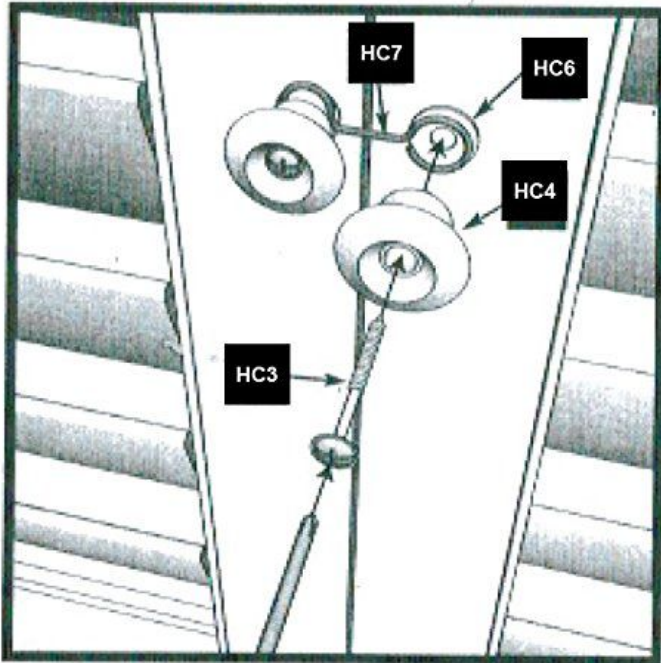
HC2

2" Screw - 4 or 6



IMPORTANT - Always use proper anchoring device (Not Included).

NOTE - All shutters can be shortened prior to installation.

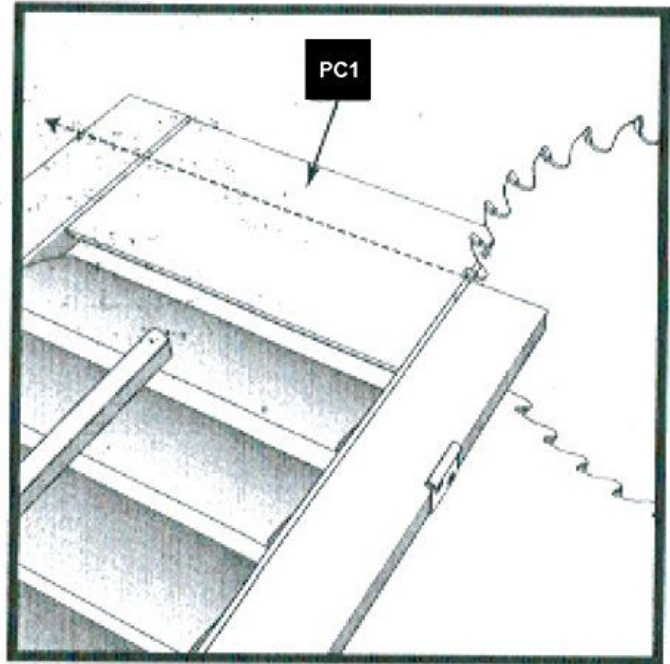


Step 1: (Fig. 5)

The Knob & Hook set is an optional decorating option and can be located at any desired height.

Locate the hook (HC7), Knobs (HC4), Washers (HC6) and 1 1/8 in. screws (HC3).

Assemble and position in desired location as shown in Fig. 5.



Step 2: (Fig. 6)

The overall height of your shutter panels (PC1) can be adjusted by trimming the top and bottom rails.

Our Traditional 1 1/4" DIY Shutter Kit Panels may be trimmed up to 3/4" inch on the top and 1 1/2" inches on the bottom.

Our Plantation 2 1/4" DIY Shutter Kit Panels may be trimmed up to 1/4" inch on the top and 1 1/2" inches on the bottom.

CARE AND MAINTENANCE

Wipe with a damp cloth or very mild spray cleaner. Dry immediately with dry cloth. Do not use heavy cleaning solvents.